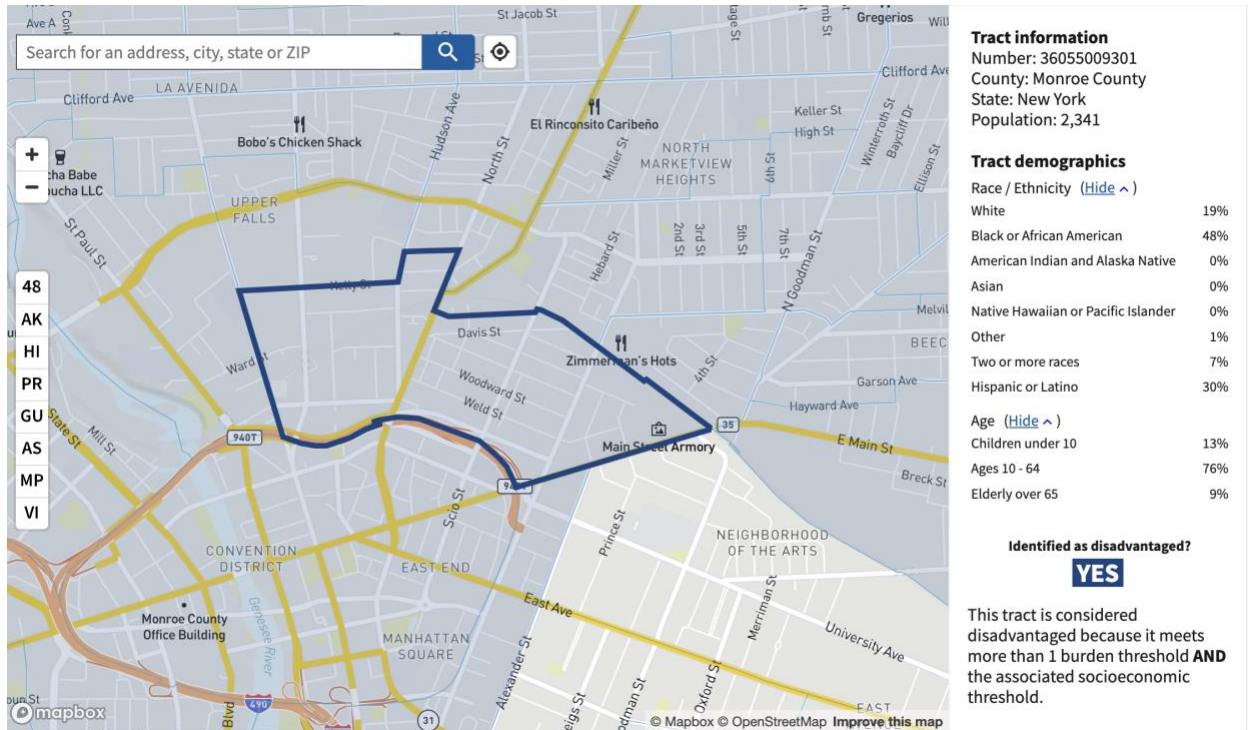
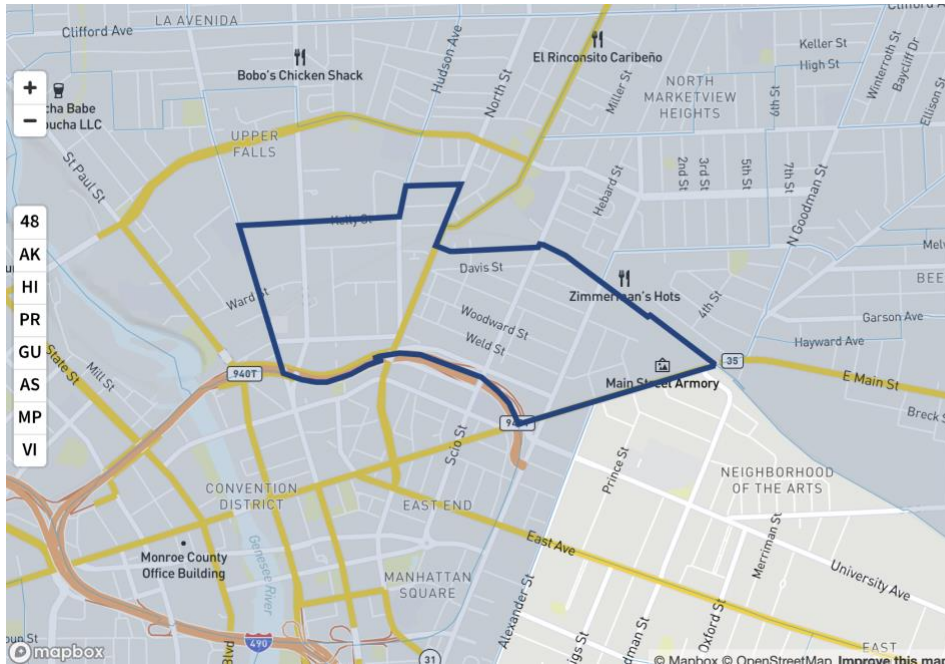


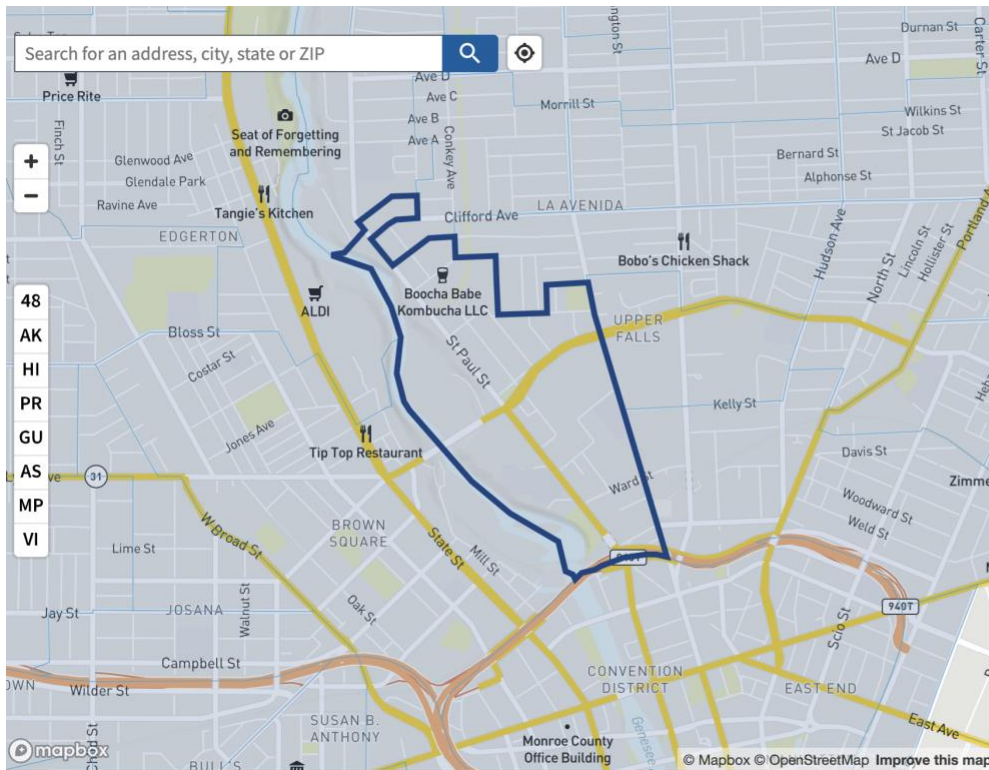
Climate and Economic Justice Screening Tool (CEJST) for Hinge Neighbors' 4 Districts: 36055009301; 36055009200, 36055000200 and 36055009400. All are identified as Disadvantaged. The 3 Districts north of the Inner Loop have issues with Energy, Health, Housing Legacy Pollution and Workforce Development. The Downtown area has issues of Housing, Legacy Pollution, Transportation and Workforce Development.





Send feedback

Climate change	+
Energy	+
Health	+
Housing	+
Legacy pollution	+
Transportation	+
Water and wastewater	+
Workforce development	+



Tract information
 Number: 36055009200
 County: Monroe County
 State: New York
 Population: 1,168

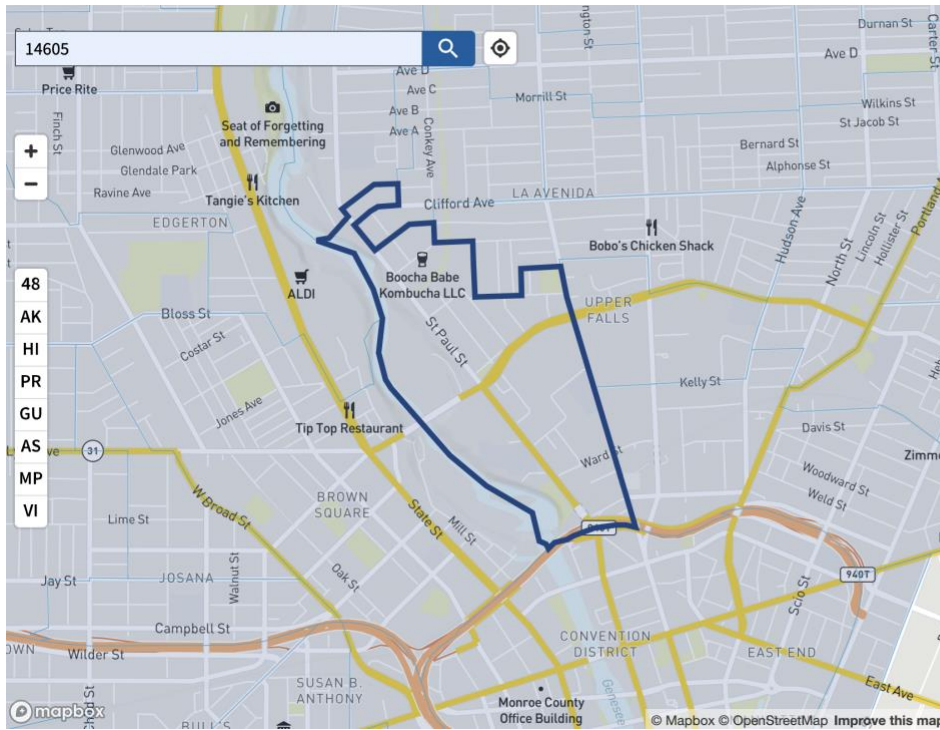
Tract demographics

- Race / Ethnicity [\(Hide ^\)](#)
- White
 - Black or African American
 - American Indian and Alaska Native
 - Asian
 - Native Hawaiian or Pacific Islander
 - Other
 - Two or more races
 - Hispanic or Latino
- Age [\(Hide ^\)](#)
- Children under 10
 - Ages 10 - 64
 - Elderly over 65

Identified as disadvantaged?

YES

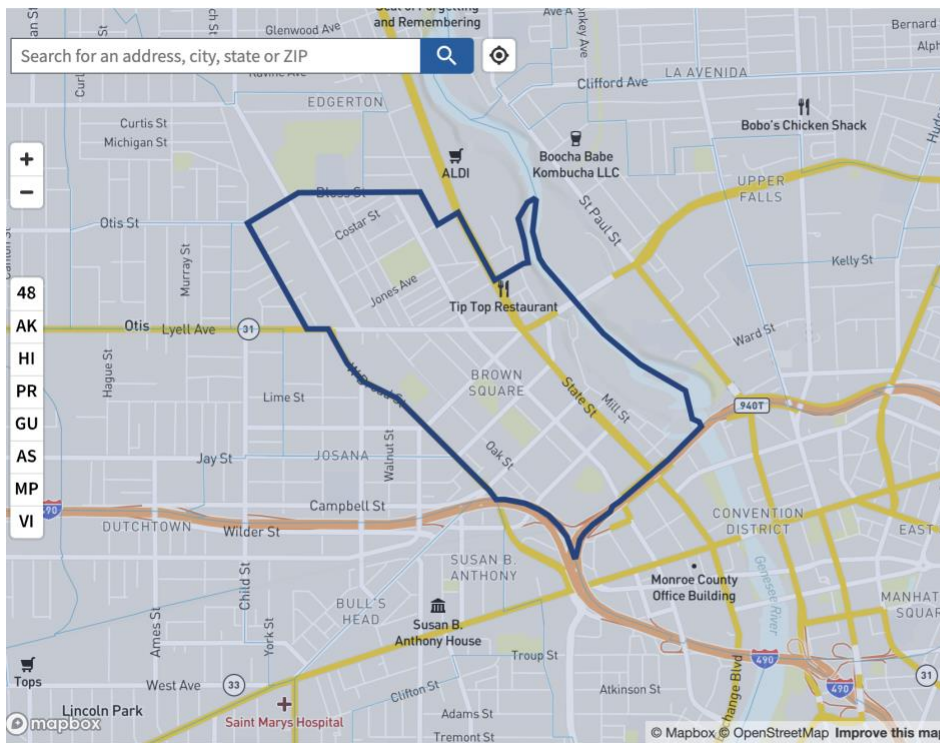
This tract is considered disadvantaged because it meets more than 1 burden threshold the associated socioeconomic threshold.



more than 1 burden threshold **AND** the associated socioeconomic threshold.

[Send feedback](#)

Climate change	+
Energy	+
Health	+
Housing	+
Legacy pollution	+
Transportation	+
Water and wastewater	+
Workforce development	+



Tract information
 Number: 36055000200
 County: Monroe County
 State: New York
 Population: 1,929

Tract demographics

Race / Ethnicity [\(Hide ^\)](#)

White	26%
Black or African American	31%
American Indian and Alaska Native	10%
Asian	7%
Native Hawaiian or Pacific Islander	0%
Other	5%
Two or more races	8%
Hispanic or Latino	30%

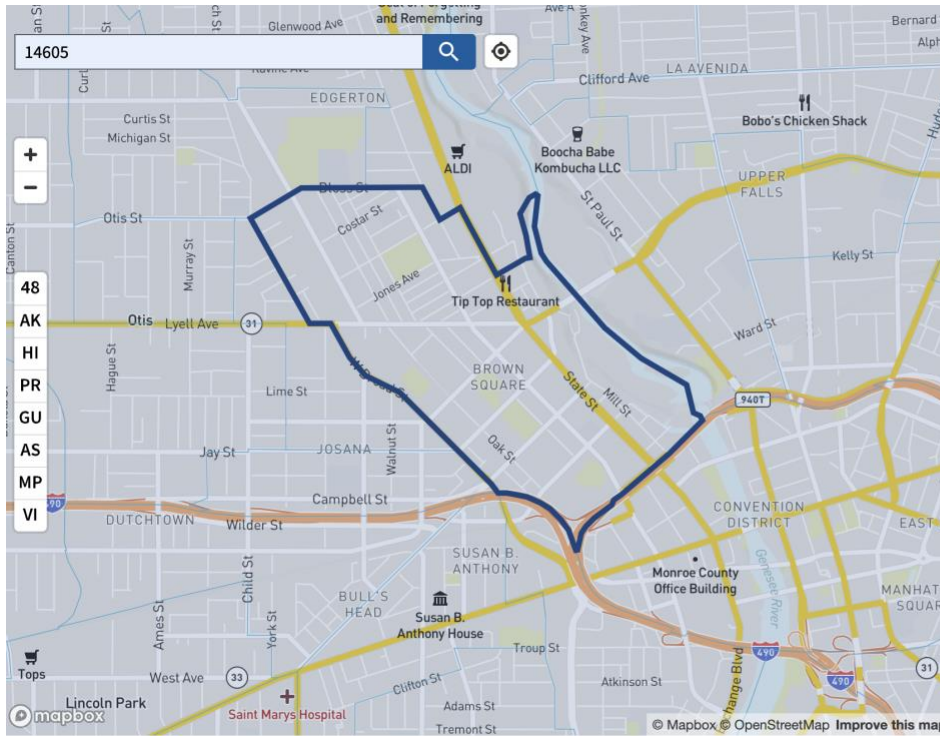
Age [\(Hide ^\)](#)

Children under 10	14%
Ages 10 - 64	79%
Elderly over 65	5%

Identified as disadvantaged?

YES

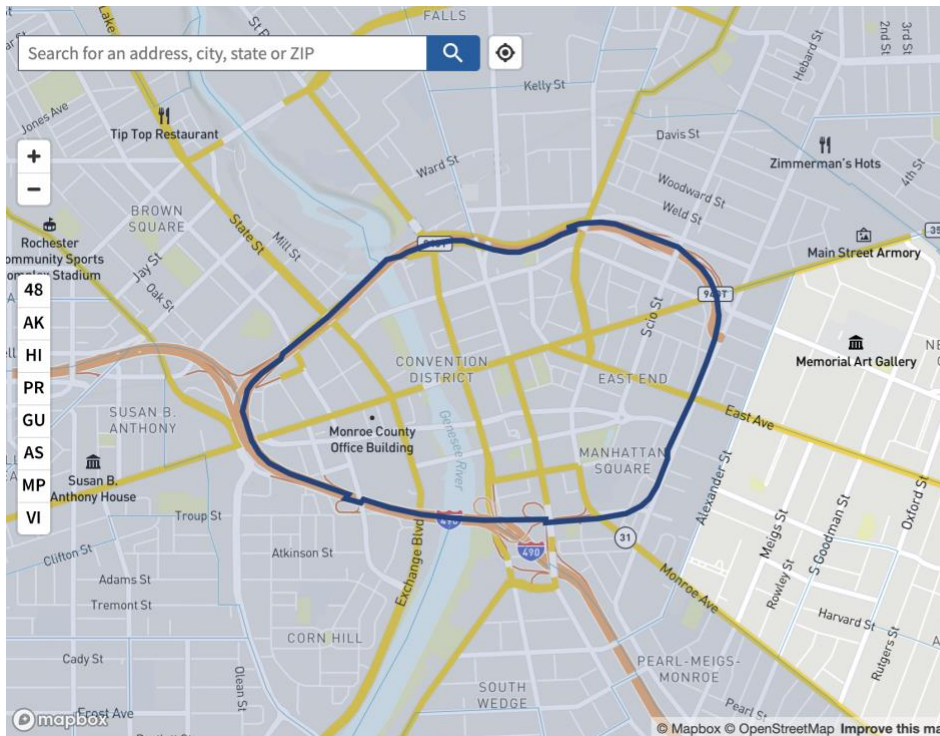
This tract is considered disadvantaged because it meets more than 1 burden threshold **AND** the associated socioeconomic threshold.



more than 1 burden threshold **AND** the associated socioeconomic threshold.

[Send feedback](#)

Climate change	+
Energy	+
Health	+
Housing	+
Legacy pollution	+
Transportation	+
Water and wastewater	+
Workforce development	+



Tract information
 Number: 36055009400
 County: Monroe County
 State: New York
 Population: 4,672

Tract demographics

Race / Ethnicity (Hide ^)

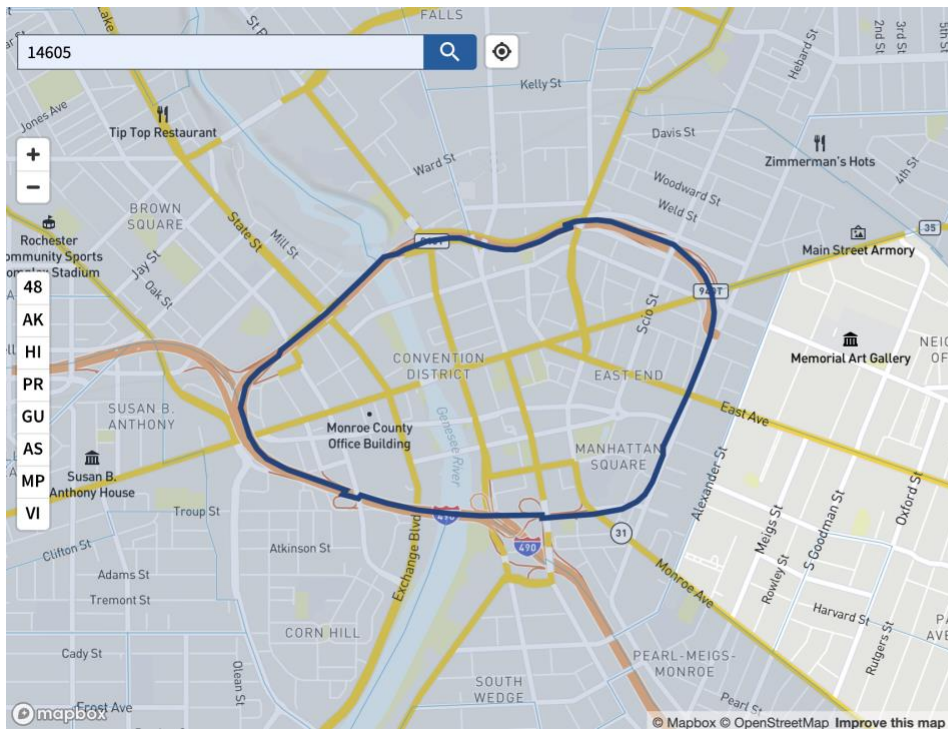
White	48%
Black or African American	34%
American Indian and Alaska Native	0%
Asian	3%
Native Hawaiian or Pacific Islander	0%
Other	1%
Two or more races	3%
Hispanic or Latino	12%

Age (Hide ^)

Children under 10	0%
Ages 10 - 64	87%
Elderly over 65	12%

Identified as disadvantaged?
YES

This tract is considered disadvantaged because it meets more than 1 burden threshold **AND** the associated socioeconomic threshold.



more than 1 burden threshold AND the associated socioeconomic threshold.

[Send feedback](#)

Climate change	+
Energy	+
Health	+
Housing	+
Legacy pollution	+
Transportation	+
Water and wastewater	+
Workforce development	+